

STATEMENT ON A NONPROPRIETARY NAME ADOPTED BY THE USAN COUNCIL

USAN

NABIXIMOLS

PRONUNCIATION

nab ix' i mols

THERAPEUTIC CLAIM

Relief of pain in patients with advanced cancer, who experience inadequate analgesia during optimized chronic opioid therapy

CHEMICAL NAMES

(A) delta-9-tetrahydrocannabinol (THC)

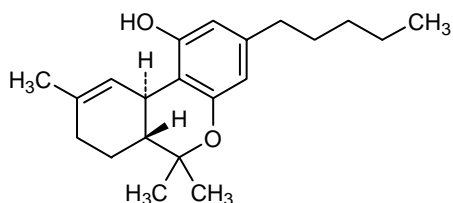
1. 6*H*-Dibenzo[*b,d*]pyran-1-ol, 6*a*,7,8,10*a*-tetrahydro-6,6,9-trimethyl-3-pentyl-, (6*aR*,10*aR*)-
2. (6*aR*,10*aR*)-6,6,9-trimethyl-3-pentyl-6*a*,7,8,10*a*-tetrahydro-6*H*-dibenzo[*b,d*]pyran-1-ol
3. Highly characterized botanical extract of a defined chemotype of *Cannabis sativa* L. The major chemical constituent is the cannabinoid, delta-9-tetrahydrocannabinol (THC). Important minor constituents are related cannabinoids and non-cannabinoid components alpha- and trans-caryophyllenes.

(B) cannabidiol (CBD)

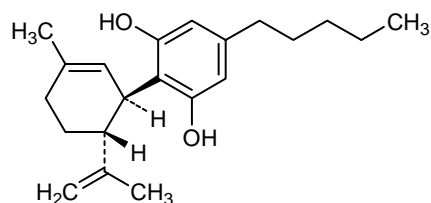
1. 1,3-Benzenediol, 2-[(1*R*,6*R*)-3-methyl-6-(1-methylethenyl)-2-cyclohexen-1-yl]-5-pentyl-
2. 2-[(1*R*,6*R*)-3-methyl-6-(1-methylethenyl)cyclohex-2-enyl]-5-pentylbenzene-1,3-diol
3. Highly characterized botanical extract of a defined chemotype of *Cannabis sativa* L. The major chemical constituent is the cannabinoid cannabidiol (CBD). Important minor constituents are related cannabinoids and non-cannabinoid components alpha- and trans-caryophyllenes.

STRUCTURAL FORMULA

(A) THC



(B) CBD



MOLECULAR FORMULA

(A) THC $C_{21}H_{30}O_2$

(B) CBD $C_{21}H_{30}O_2$

MOLECULAR WEIGHT

(A) THC 314.47

(B) CBD 314.47

TRADEMARK

Sativex[®]

MANUFACTURER

GW Pharma Ltd

CODE DESIGNATION

GW-1000

CAS REGISTRY NUMBER

(A) THC 1972-08-3

(B) CBD 13956-29-1