

March 25, 2015

STATEMENT ON A NONPROPRIETARY NAME ADOPTED BY THE USAN COUNCIL

USAN (CD-61) ADAGLOXAD SIMOLENIN

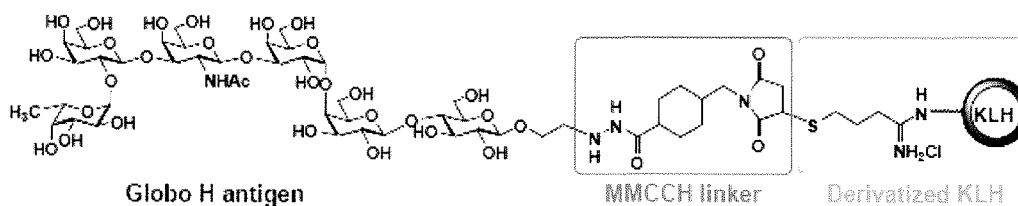
PRONUNCIATION a" da glox' ad sim" oh len' in

THERAPEUTIC CLAIM Antineoplastic

CHEMICAL NAME

1. Cyclohexanecarboxylic acid, 4-[(2,5-dihydro-2,5-dioxo-1*H*-pyrrol-1-yl)methyl]-, 2-[2-[[*O*-6-deoxy- α -L-galactopyranosyl-(1 \rightarrow 2)-*O*- β -D-galactopyranosyl-(1 \rightarrow 3)-*O*-2-(acetylamino)-2-deoxy- β -D-galactopyranosyl-(1 \rightarrow 3)-*O*- α -D-galactopyranosyl-(1 \rightarrow 4)-*O*- β -D-galactopyranosyl-(1 \rightarrow 4)- β -D-glucopyranosyl]oxy]ethyl]hydrazide, reaction products with hemocyanin keyhole limpet

STRUCTURAL FORMULA



KLH1 Sequence:

MLSVRL LIVV	LALANAENLV	RKSVEHLTQE	ETLDLQAALR	ELQMDSSSIG	FQKIAAAHGA	60
PASCVHKDTS	IACCIHGMP	FPHWHRAYVV	HMERALQTKR	RTSGLPYWDW	TEPITQLPSL	120
AADPVYIDSQ	GGKAHTNYWY	RGNIDFLDKK	TNRAVDDRLF	EKVKPGQHTH	LMESVLDAL	180
QDEFCKFEIQ	FELAHNAIHY	LVGGKHDYSM	ANLEYTAYDP	IFFLHHSNVD	RIFAIWQRLQ	240
ELRNKDPKAM	DCAQELLHQK	MEPFSWEDND	IPLTNDYDTL	NLNGMTPEEL	KTYLDERSSR	300
ARAFASFRLK	GFGGSANV FV	YVCIPDDNDR	NDDHCEKAGD	FFVLGGPSEM	KWQFYRPFYLF	360
DLSDTVHKMG	MKLDGHYTVK	AELFSVNGTA	LPDDLPHPV	VVHHPEKGFT	DPPVKHHQSA	420
NLLVRKNIND	LTREEVLNLR	EAFHKFQEDR	SVDGYQATAE	YHGLPARCPR	PDAKDRYACC	480
VHGMPIFPHW	HRLFVTQVED	ALVGRGATIG	IPYWGLPYWD	WTEPMTHIPG	LAGNKTYVDS	540
HGASHTNPFH	SSVIAFEENA	PHTKRQIDQR	LFKPATFGHH	TDLFNQILYA	FEQEDYCDFE	600
VQFEITHNTI	HAWTGGSEHF	SMSLHYTAF	DPLFYFHHSN	VDRWLAVWQA	LQMRRHKPYR	660
AHCAISLEHM	HLKPFASFSSP	LNNNEKTHAN	AMPNKIYDYE	NVLHYTYEDL	TFGGISLENI	720
EKMIHENQQE	DRIYAGFLLA	GIRTSANVDI	FIKTTDSVQH	KAGTFAVLGG	SKEMKWGFDR	780
VFKFDITHVL	KDLDLTADGD	FEVTVDITEV	DGTKLASSLI	PHASVIREHA	RGKLN RVKFD	840
KVPRSRLIRK	NVDRLSPEEM	NELRKALALL	KEDKSAGGFQ	QLGAFHGEPEK	WCPSPEASKK	900
FACCVHGMSV	FPHWHRLLTV	QSENALRRHG	YDGALPYWDW	TSPLNHLPEL	ADHEKYVDPE	960
DGVEKHNPFW	DGHIDTVDKT	TTRSVMQKLF	EQPEFGHYTS	IAKQVLLALE	QDNFCDFEIQ	1020
YEIAHNYIHA	LVGGAQPYGM	ASLRYTAFDP	LFYLVHHSNTD	RIWAIWQALQ	KYRGKPYNVA	1080
NCAVSMREP	LQPFGLSANI	NTDHVTKEHS	VPFNVFDYKT	NFNYEYDTLE	FNGLSISQLN	1140
KKLEAIKSQD	RFFAGFLLSG	FKKSSLVKFN	ICTDSSNCHP	AGEFYLLGDE	NEMPWAYDRV	1200
FKYDITEKLH	DLKLHAEDHF	YIDYEVFDLK	PASLGKDLFK	QPSVIHEPRI	GHHEGEVYQA	1260
EVTSANRIRK	NIENLSLDEL	ESLRAAFLEI	ENDGTYESIA	KFHGSPGLCQ	LNGNPISCCV	1320

HGMPTFPHWH	RLYVVVVENA	LLKKGSSVAV	PYWDWTKRIE	HLPHLISDAT	YNSRQHHYE	1380
TNPFHHGKIT	HENEITTRDP	KDSLFHSDYF	YEQVLYALEQ	DNFCDFEIQ	EILHNALHSL	1440
LGGKGKYSMS	NLDYAAFDPV	FFLHHATTD	IWAIWQDLQR	FRKRYPYREAN	CAIQMLMHTPL	1500
QPFDKSDNND	EATKTHATPH	DGFYQNSFG	YAYDNLELNH	YSIPQLDHML	QERKRHRDRVF	1560
AGFLLHNIGT	SADGHVFCVL	PTGEHTKDCS	HEAGMFSILG	GQTEMSFVFD	RLYKLDITKA	1620
LKKNGVHLQG	DFDLEIEITA	VNGSHLDSHV	IHSPTILFEA	GTDSAHTDDG	HTEPVMIRKD	1680
ITQLDKRQQL	SLVKALESMA	ADHSSDGFQA	IASFHALPPL	CPSPAASKRF	ACCVHGMATF	1740
PQWHRLYTVQ	FQDSLRLKHGA	VVGLPYWDWT	LPRSELPELL	TVSTIHPET	GRDIPNPFIG	1800
SKIEFEGENV	HTKRDINRDR	LFQGSTKTHH	NWFIEQALLA	LEQTNYCDFE	VQFEIMHNGV	1860
HTWVGKEPEY	GIGHLHYASY	DPLFYIHHSQ	TDRIWAIWQS	LQRFRLSGS	EANCAVNLMK	1920
TPLKPFSSFGA	PYNLNDHTHD	FSKPEDTFDY	QKFGYIYDTL	EFAGWSIRGI	DHIVRNRQEH	1980
SRVFAGFLE	FQGTSAVDF	QVCRTAGDCE	DAGYFTVLGG	EKEMPWAFDR	LYKYDITETL	2040
DKMNLRHDEI	FQICTSEDC	HGGQIFVLG	PTPSIIYDPA	HDDISSHLS	LKNVRHDLST	2100
LSERDIGSLK	YALSSLQADT	SADGFAAIAS	FHGLPAKCN	SHNNEVACCI	HGMPTFPHWH	2160
RLYTLQFEQA	LRRHGSSVAV	PYWDWTKPIH	NIPHLFTDKE	YYDVWRNKVM	PNPFARGYVP	2220
SHDITYVRDV	QEGFLHST	GEHSALLNQA	LLALEQHDCY	DFAVQFEVMH	NTIHVLVGGP	2280
QVYSSSLHY	ASYDPIFFIH	HSFVDKVWAV	WQALQEKRGL	PSDRADCAVS	LMTQNMRFPH	2340
YEINHNQFTK	KHAVPNDVFK	YELLYGRYDN	LEIGGMNLHE	IEKEIKDKQH	HVRVFAGFLL	2400
HGIRTSADVQ	FQICKTSEDC	HGGQIFVLG	GTKEMAWAYN	RLFKYDITHA	LHDAHITPED	2460
VFHPSEPFPI	KVSVTAVNGT	VLPASILHAP	TIIEYEPGLDH	HEDHSSSMA	GHGVRKEINT	2520
LTAEVDNLK	DAMRAVMADH	GPNGYQAI	FHGNNPCPM	PDGKNYSCCT	HGMATFPHWH	2580
RLYTKQMEDA	LTAGHARVGL	PYWDGTTAFT	ALPTFVTDEE	DNPFHHGHID	YLGVDTTTRSP	2640
RDKLFNDPER	GSEFFYRQV	LLALEQTDFC	QFEVQFEITH	NAIHSWTGGL	TPYGMSTLEY	2700
TTYDPLFWLH	HANTDRIWAI	WQALQEYRGL	PYDHANCEIQ	AMKRPLRPF	DPINHNAFTH	2760
SNAKPTDVFE	YSRFNFQYDN	LRFHGMTIKK	LEHELEKQKE	EDRTFAAFLL	HGIKKSADVS	2820
FDVCNHGDEC	HFAGTFAILG	GEHEMPWSFD	RLFRYDITQV	LKQMHLEYDS	DFTFHMRIID	2880
TSGKQLPSDL	IKMPTVEHSP	GKHEKHEHHE	DHEDILVRK	NIHSLSHHEA	EELRDALYKL	2940
QNDESHGGYE	HIAGFHGYPN	LCPEKGDEKY	PCCVHGMSIF	PHWHLHTIQ	FERALKKHGS	3000
HLGIPYWDWT	QTISLPTFF	ADSGNNPFF	KYHIRSINQD	TVRDVNEAIF	QQTGFGEFSS	3060
IFYLALQALE	EDNYCDFEVQ	YELHNEVHA	LIGGAEKYSM	STLEYSAFDP	YFMIHHASLD	3120
KIWIWQELQ	KRRVKPAHAG	SCAGDIMHVP	LHPFNYESVN	NDDFTRENLS	PNAVVDSHRF	3180
NYKYDNLNLQ	GHNIEELEEV	LRSRLKSRV	FAGFVLSGIR	TTAVVKVYIK	SGTDSDEYA	3240
GSFVILGGAK	EMPWAYERLY	RFDITETVHN	LNLTDHVKF	RFDLKYDHT	ELDASVLPAP	3300
IIVRRPNNAV	FDIIEIPIGK	DVNLPKVVV	KRGTKIMFMS	VDEAVTTPML	NLGSYTAMFK	3360
CKVPPFSFHA	FELGKMSVVE	SGDYFMTAST	TELCNDNNLR	IHVHVDDE		3408

KLH2 Sequence:

MWTILALLTA	TLLFEGAFSV	DTVVRKNVDS	LSSDEVLALE	KALDDLQDD	SNQGYQAIAG	60
YHGVPMTMCD	KHEKNVACCL	HGMPSFPLWH	RLYVVQLERA	LIRKKATISI	PYWDWTSELT	120
HLPELVSHPL	FVGTGEGKAH	DNSWYRADIT	FLNKKTSRAV	DDRLFKEVQP	GHHTRLMEGI	180
LDALQDEFCE	KFEIQFELAH	NAIHVLVGG	HTYSMSHLEY	TSYDPLFFLH	HSNTDRIFAI	240
WQRLQQLRGK	DPNSADCAHN	LIHTPMEPFD	RDTPNLDLTR	EHAKPADSFD	YGRLLQCYDD	300
LSLNGMSPEE	LNVVLGERAA	KERTFASFIL	SGFGGSANVV	VYVCRPAHDE	ISDDQCICAG	360
DFLLGGPTE	MKWGFYRAYH	FVDVTSVASI	DDDGHHGYV	KSELSVNGS	ALSNDILRQP	420
TLVHRPAKGH	FDKPPVPAQ	ANLAVRKNIN	DLTAEETYSL	RKAMERFQND	KSVDGYQATV	480
EFHALPARCP	RPDAKDRFAC	CVHGMATFPH	WHRLFVTQVE	DALLRRGSTI	GLPNWDWTMP	540
MDHLPELATS	ETYLDPVTEG	TKNNPFHHAQ	VAFENGVTSR	NPDAKLFMKP	TYGDHTYLF	600
SMIYAFEQED	FCDFEVQYEL	THNAIHAWVG	GSEKYSMSSL	HYTAFDPIFY	LHHSNVDRLW	660
AIWQALQIRR	GKSYKAHCAS	SQEREPLKPF	AFSSPLNNE	KTYHNSVPTN	VYDYVGLVHY	720
RYDDLQFGGM	TMSELEEYIH	KQTQHRTFA	GFFLSYIGTS	ASVDIFINRE	GHDKYKVGFS	780
VVLGGSKEMK	WGFDRMYKYE	ITEALKTLNV	AVDDGFSITV	EITDVGSP	SADLIPPAI	840
IFERADAKDF	GHSRKRKAV	DSLTVEEQTS	LRRAMADLQD	DKTSGGFQOI	AAFHGEPKWC	900
PSPEAEKKFA	CCVHGMVAVP	HWHRLLTVQG	ENALRKHGFT	GGLPYWDWTR	SMSALPHFVA	960
DPTYNDAISS	QEEDNPWHHG	HIDSVGHDTT	RDVRDDLQYS	PGFGHYTDIA	KQVLLAFEQD	1020
DFCDFEVQFE	IAHNFIHALV	GGNEPYSMSS	LYRTTYDPIF	FLHRSNTDRL	WAIWQALQKY	1080
RGKPYNTANC	AIASMRKPLQ	PFGLDVINP	DDETRHVSVP	FRVFDYKNNF	DYEVESLAFN	1140
GLSIAQLDRE	LQRRKSHDRV	FAGFLLEHIG	QSALVKFYVC	KHNVSDCDHY	AGEFYILGDE	1200
AEMPWRYDRV	YKYEITQQLH	DLDLHVGDNF	FLKYEAFDLN	GGSLGGSIFS	QPSVIFEPAA	1260
GSHQADEYRE	AVTSASHIRK	NIRDLSEGEI	ESIRSAFLQI	QKEGIYENIA	KFHGKPLCE	1320
HDGHPVACCV	HGMPTFPHWH	RLYVLQVENA	LLERGSVAV	PYWDWTEKAD	SLPSLINDAT	1380
YFNRSRQTFD	PNPFRRGHIA	FENAVTSRDP	QPELWDNKDF	YENVMLALEQ	DNFCDFEIQ	1440
ELIHNALHSR	LGGRAKYSLS	SLDYTAFDPV	FFLHHANVDR	IWAIWQDLQR	YRKKPYNEAD	1500

CAVNEMRKPL	QPFNNPELNS	DSMTLKHNLPL	QDSFDYQNR	RYQYDNLQFN	HFSIQKLDQT	1560
IQARKQHDRV	FAGFILHNIG	TSAVVDIYIC	VEQGGEQNCK	TKAGSFTILG	GETEMPFHFD	1620
RLYKFDITSA	LHKLGVPLDG	HGFDIKVDVR	AVNGSHLDQH	ILNEPSLLFV	PGERKNIIYYD	1680
GLSQHNLRK	EVSSLTTLEK	HFLRKALKNM	QADDSPDGYQ	AIASFHALPP	LCPSPSAAHR	1740
HACCLHGMAT	FPQWHRLYTV	QFEDSLKRHG	SIVGLPYWDW	LKPQSALPDL	VTQETYEHLE	1800
SHKTFPNPFL	KANLEFEFEG	VTTTERDVDAE	HLFAKGNLVY	NNWFCNQALY	ALEQENYCDF	1860
EIQFEILHNG	IHSWVGSKT	HSIGHLHYAS	YDPLFYIHHS	QTDRIWAIWQ	ALQEHRGLSG	1920
KEAHCALQOM	KDPLKPFSSG	SPYNLNKRTQ	EFSKPEDTFD	YHRFGYEYDS	LEFVGMSVSS	1980
LHNYIKQQQE	ADRVFAGFLL	KGFQGSASVS	FDICRPDQSC	QEAGYFVSLG	GSSEMPWQFD	2040
RLYKYDITKT	LKDMKLRYDD	TFTIKVHIKD	IAGAELESDL	IPTPSVLLLE	GKHGINVRHV	2100
GRNRIRMELS	ELTERDLASL	KSAMRSLQAD	DGVNGYQAIA	SFHGLPASCH	DDEGHEIACC	2160
IHGMPVFPFH	HRLYTLQMDM	ALLSHGSAVA	IPYWDWTKPI	SKLPDLFTSP	EYYDPWRDAV	2220
VNNPFAKGYI	KSEDAYTVRD	PQDILYHLQD	ETGTSVLLDQ	TLLALEQTDF	CDFEVQFEVV	2280
HNAIHVLVGG	RQVYALSSQH	YASYDPAFFI	HHSFVDKIWA	VWQALQKKRK	RPYHKADCAL	2340
NMMTKPMRPF	AHDFNHNGFT	KMHAVPNTLF	DFQDLFYTYD	NLEIAGMNVN	QLEAEINRRK	2400
SQTRVFAGFL	LHGIGRSADV	RFWICKTADD	CHASGMIFIL	GGSKEMHWAY	DRNFKYDITQ	2460
ALKAQSIHPE	DVFDTDAPFF	IKVEVHGUNK	TALPSSAIPA	PTIIYSAGEG	HTDDHGSDDI	2520
AGSGVRKDVT	SLTASEIENL	RHALQSVMD	DGPNGFQAIA	AYHGSPPMCH	MXDGRDVACC	2580
THGMASFPHW	HRLFVKQMED	ALAAHGAHIG	IPYWDWTSF	SHLPALVTDH	EHNPFHHGHI	2640
AHRNVDTSR	PRDMLFNDPE	HGSESFYRQ	VLLALEQTDF	CQFEVQFEIT	HNAIHSWTGG	2700
HTPYGMSLE	YTAYDPLFYL	HHSNTDRIWA	IWQALQKYRG	FQYNAAHCDI	QVLKQPLKPF	2760
SESRPNPVT	RANSRAVDSF	DYERLNYQYD	TLTFHGHSIS	ELDAMLQERK	KEERTFAAFL	2820
LHGFGASADV	SFDVCTPDGH	CAFAGTFAVL	GGELEMPWSF	ERLFRYDITK	VLKQMNHLHYD	2880
SEFHFEKIV	GTDTGTELPD	RIKSPTIEHH	GGDHHGGDTS	GHDHSEHHDG	FFRKEVGSLS	2940
LDEANDLKNA	LYKLQNDQGP	NGYESIAGYH	GYPFLCPEHG	EDQYACCVHG	MPVFPWHHRL	3000
HTIQFERALK	EHGSHLGIPY	WDWTKSMIAL	PAFFADSSNS	NPFYKYHIMK	AGHDTARSPS	3060
DLLFNQPQLH	GDYLYLYLAL	STLEEDNYCD	FEVHYEILHN	AVHLWLGGTE	TYSMSSLAFS	3120
AYDPVFMILH	SGLDRLWIIW	QELQKLRKKP	YNAAKCAGHM	MDEPLHPFNY	ESANHDSFTR	3180
ANAKPSTVFD	SHKFNYHYDN	PVVRGNSIQE	ISAIHDLRN	QPRVFAGFVL	SGIYTSANVK	3240
IYLVREGHDD	ENVGSFVVLG	GPKEMPWAYE	RIFKYDITEV	ANRLNMHHDD	TFNFRLEVQS	3300
YTGEMVTHHL	PEPLIIYRPA	KQEYDVLVIP	LGSGHKLPPK	VIVKRGRTRIM	FHPVDDTVNR	3360
PVVDLGSHTA	LYNCVVPFPT	YNGYELDHAY	SLRDGHYYIA	GPTKDLCTSG	NVRIHIHIED	3420
E						3421

TRADEMARK	None as yet
SPONSOR	OBI Pharma, Inc.
CODE DESIGNATIONS	OBI-822
CAS REGISTRY NUMBER	1458687-85-8
UNII	UCG949AA7Z
WHO NUMBER	no INN

SCS